

Safety Length Simulation of Natural Gas Pipeline Subjected to Transverse Landslide

Guizhi Li, Peng Zhang, Zhixiang Li, Zunhai Ke, Gengxin Wu

School of Civil Engineering and Architecture, Southwest Petroleum University, Chengdu, China.

e-mail: lgz200811@163.com, zp_swpi@sina.com, zxnlee92@gmail.com, 616042103@qq.com, 578691540@qq.com

ABSTRACT

The safety of natural gas pipeline is often severely threatened by the transvers landslide. At home and abroad, it is the first time to study the safe length of the pipeline when affected by landslide, and to take the safe length of the pipeline as an engineering practical index. Therefore, it is of great significance to study the influence of transverse landslide to the safety of natural gas pipeline when a certain length of pipeline is thrust, and to establish practical index and simulation method for prediction and prevention of the landslide hazards to gas pipeline. Based on the current research results, this study could be divided into three steps: First of all, with the help of ANSYS finite element software, the model of transverse landslide acting on the gas pipeline can be set up, then the length value of gas pipeline safely withstanding transverse landslide can be calculated; Secondly, using the strength reduction method, which is commonly used in the research of landslide stability, can establish three-dimensional model of the landslide and pipes in the ABAQUS finite element software, next, under the same landslide pushed length, the calculation results will be obtained; Finally, to draw reliable conclusions, all calculated results of the former two methods will be linked to synthetically and comparatively analyze, then the length value of common X80 gas pipeline safely bearing transverse landslide can be got. All results can provide some references for engineering and design.

KEYWORDS: Transverse Landslide, Gas Pipeline, Finite Elements Simulation, Strength Reduction Method

INTRODUCTION

Natural gas pipeline is a kind of important energy transportation facilities. Therefore, to avoid it suffering natural or man-made damage has very important practical significance. However, this kind of pipeline has the long linear engineering characteristic that make it often subjected to landslide damage [1-3]. This damage may cause pipeline large deformation, fracture, or explosion etc. and it can lead to the natural gas leakage, pipeline transportation interruption, even casualties. How to prevent and control the loss caused by landslide disaster has been becoming a problem which needs to be studied continuously by engineers and researchers.

Currently, the number of the research findings [4-10] about the transverse landslide [11] (**Figure 1**) acting on the natural gas and petroleum pipeline has been increasing abundantly. But most of them aim to find out the mechanical behavior, the weak position, the influence factors, etc. of the pipe under landslide. And they are all more theoretical rather than practical, moreover, the prediction and

prevention practical indicators of pipeline damaged by landslide disaster are not proposed. Engineering practice shows that before the landslide happening, the ground surface tends to present some certain characteristics, such as cracks, deformations, sliding, etc., and experienced engineers can determine the landslide scale roughly according to these characteristics. However, it is still necessary to observe and even calculate the damage degree of the landslide to the pipeline. If a kind of direct index can be offered for engineering practice, then contrasting it with the scale of landslide. Through that, whether the natural gas pipeline will be destroyed or not can be more accurately evaluated. Moreover, it can become a kind of reliable basis for engineering rescuing, and according to that, emergency workers can take measures in time to prevent the expansion of damage. So such index is of great significance for practice.

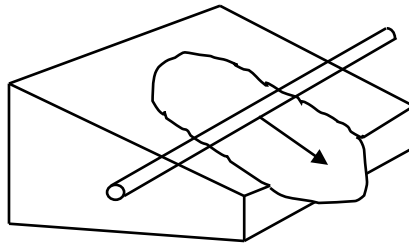


Figure 1: Transverse landslide schematic diagram.

At home and abroad, it is the first time to study the length of the pipeline affected by landslide, and to take the length of the pipeline safety as engineering practical index. Thus, in this paper, the length of the pipeline is studied as the research object. Through finite element simulation, this study calculated the length of general natural gas pipeline X80 in different depth safely withstanding the action of transverse landslide. The results with admirable available property can provide a direct and reliable practical indicator for prevention and controlling hazards to the pipe when landslide happens.

METHODOLOGY

In order to make the research conclusion accurate and reliable, this study divided into three steps: First of all, in consideration of the landslide-thrust distribution on the natural gas pipe [12] and pipe-soil interaction research methods and findings [13-19], in the landslide area, the function of the landslide loaded on the natural gas pipe is simplified to thrust form, but outside the landslide area, the contact relationship is established. After that, with the help of ANSYS finite element software, the model of transverse landslide acting on the natural gas pipeline can be set up, and the length of the natural gas pipeline safely withstanding transverse landslide can be calculated. Secondly, using the strength reduction method, which is commonly used in the research of landslide stability, can establish three-dimensional model of the landslide and pipe in the ABAQUS finite element software, next, under the same landslide loaded length, the calculation results will be obtained. Finally, to draw reliable conclusions, all calculation results of the former two methods will be linked to synthetically and comparatively analyze, then the length value of common X80 gas pipeline safely bearing transverse landslide can be got. All results can provide some references for engineering and design.

Simplified model

When pipeline is subjected to transverse landslide, it will produce large deformations, and the pipe-soil shall present complex nonlinear contact status. In order to simulate the corresponding behavior of pipeline, Shell181 element is took to simulate the natural gas pipe. Although soil consists of soil particles, but it often appears as entities in nature, so it can be regarded as one kind solid

with elasticity and plasticity. In order to simulate the non-slip area soils more realistically, Solid185 element is used. Between the pipe and soil, the contact relationship is set up, which use TARGE170 unit and CONTA174 unit as the target surface element and contact surface element respectively.

Here, X80 pipe is used as the pipe modeling material, and the parameters are shown in **Table 1**. For the pipe stress-strain relationship curve, the ideal elastic-plastic bilinear kinematic hardening model is taken and shown in **Figure 2**. Outside the landslide zone, the soil parameters are adopted as follows: the density is 2000kg/m³, the elastic modulus is 32.5MPa, the poisson's ratio is 0.35, the internal cohesion is 15 kPa, and the internal friction angle takes 10°. It is worth noting that the weight of the natural gas is averaged distribution into the pipe body, so the natural gas pipeline equivalent density ρ_{eq} is 9197.7 kg/m³.

Table 1: Physical parameters of X80 Pipe

D	δ	γ	P	ρ	σ_1	μ	E_1	E_2
1016	15.3	0.85	10	7850	555	0.3	207	6210

Notes: pipe diameter D (mm), pipe thickness δ (mm), natural gas density γ (kN/m³), internal pressure P (MPa), pipe density ρ (kg/m³), pipe material yield strength σ_1 (MPa), poisson's ratio μ , the elastic modulus E_1 (GPa), the tangent modulus E_2 (MPa).

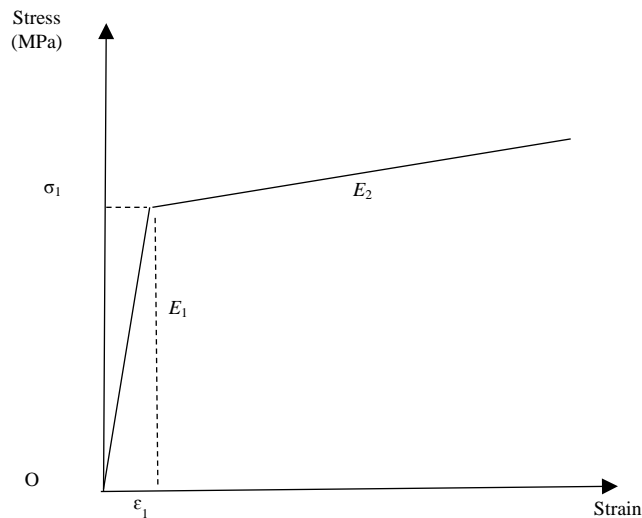


Figure 2: Pipe ideal stress-strain relationship model

The engineering practice shows that the soil mass in the non-slip area is basically in elastic state, so the soil can be regarded as an elastic material. The semi-symmetric finite element model (FEM model) is set up as **Figure 3**.

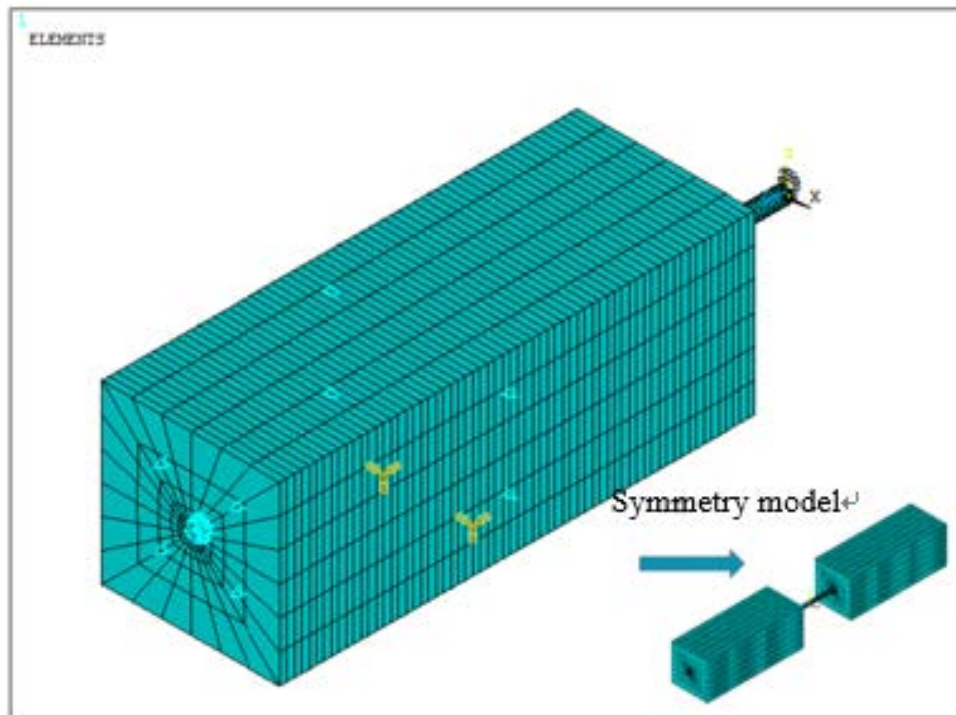


Figure 3: Simplified model of landslide and pipe

The length of the natural gas pipe is five times as long as the half-length pushed by the transverse landslide. The non-slip soil bulk width along the pipe transverse is 12 times long as the pipe diameter, but along the pipe axial direction is 4 times long as the half-length loaded by the transverse landslide. In the soil bulk, the upper surface and one end face near the landslide is free surface, but another end face far from the landslide is constrained along the pipe axis direction. The front and back plane of non-slip soil bulk are fixed up perpendicular to these corresponding surface. The soil base is fixed in all directions. On the natural gas pipe's two ends, one end away from landslide is constrained along the pipe axis, and the other end fixed as symmetry constraint.

Research [12] has shown that: under the action of transverse landslide, the pipe experiences different thrust force in different buried depth. Hereby, the thrust force on pipe in different buried depth is calculated and listed as follows (Table 2). About the distribution of thrust force along the pipe due to landslide, the study [20] have assumed it as uniform distribution, but in actual, the load distribution along the pipe is more closer to the parabolic distribution. Therefore, it will be assumed as a parabolic distribution in this article, and the parabolic vertex load is calculated as the study [12].

Table 2: Thrust value of pipe buried in different depth

δ	15.3		
H	1	2	3
β	q		
15	151.2	193	234.8
30	149	186.5	223.9
45	140.4	170.9	201.5
60	125.9	147.5	169.1
75	106.5	117.7	128.9

Notes: pipe thickness δ (mm), buried depth of pipeline H (m), angle between horizontal plane and soil sliding direction in place where pipe buried β ($^{\circ}$), uniform load q (kN/m).

In order to get the limit length value of the natural gas pipeline safely bearing transverse landslide, the pipeline failure criteria is on the basis of that: the pipe Von Mises stress reach the pipe material yield strength. After a large number of trial, the final results is listed as follows (**Table 3**), and the relevant graphs are drawn such as (**Figure 4, 5, 6, and 7**). At the same time, in order to observe the stress response characteristics of pipeline under the landslide, the finite element Mises stress contour plot of pipeline (it is buried in 2m depth; the pipe length loaded by landslide process is 27m; the angle between horizontal plane and soil sliding direction in place where pipe buried is 30°) is taken as an example shown in **Figure 8**.

Table 3: Calculation results of different pipe length subjected to transverse landslide

H			1	2	3		
L			30	24	27	24	24
15	σ_{\max}		558	540	566	550	562
	U_{\max}		0.5092	0.221	0.491	0.2897	0.3987
30	σ_{\max}		557	539	559	545	556
	U_{\max}		0.5049	0.2199	0.4614	0.2807	0.3673
β 45	σ_{\max}		557	536	551	542	549
	U_{\max}		0.4602	0.2093	0.3704	0.2566	0.3136
60	σ_{\max}		547	514	543	540	544
	U_{\max}		0.3989	0.1901	0.3277	0.2211	0.251
75	σ_{\max}		539	489	538	497	519
	U_{\max}		0.3341	0.178	0.2598	0.1794	0.1925

Notes: buried depth of pipeline H (m), pipe length pushed by landslide process L(m), angle between horizontal plane and soil sliding direction in place where pipe buried β (°), the max Von Mises stress of pipe σ_{\max} (MPa), the max displacement of pipe U_{\max} (m).

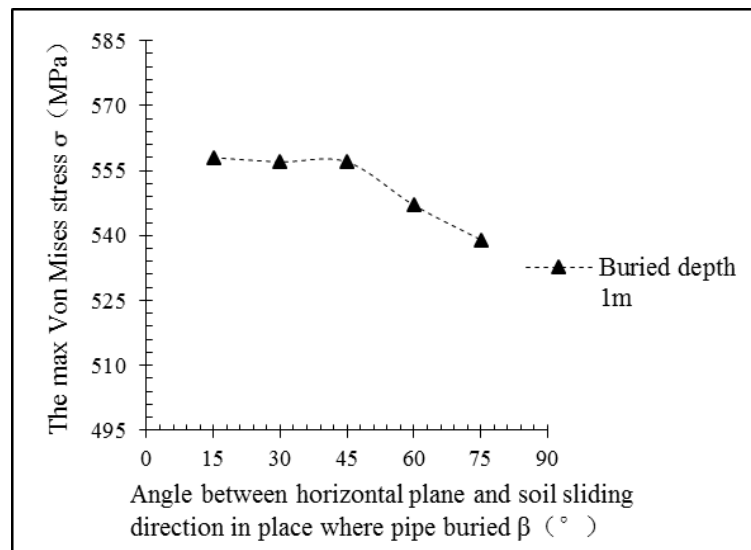


Figure 4: L=30m, the max Von Mises stress

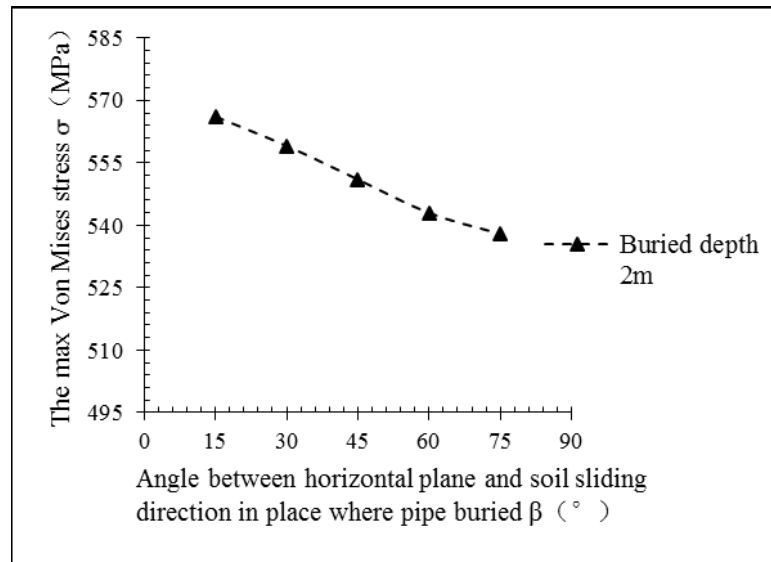


Figure 5: $L=27\text{m}$, the max Von Mises stress

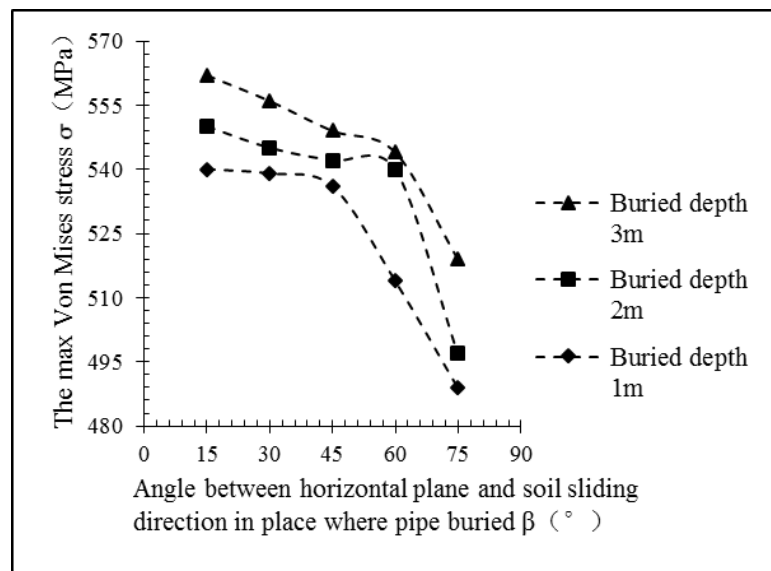


Figure 6: $L=27\text{m}$, the max Von Mises stress

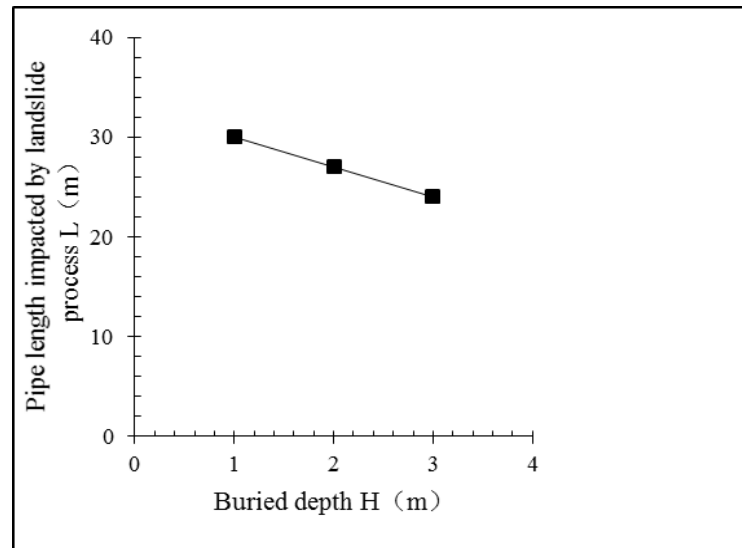


Figure 7: Limit length value of pipeline bearing landslide

Observing **Figure 4, 5, 6, and 7**, it is easy to draw the following conclusions:

With the increase in β value, the σ_{\max} value decreases gradually when the same L value is adopted.

With the increase in H value, the σ_{\max} value increases gradually when the same L value is adopted.

With the increase in H value, the limit length of pipeline safely withstanding transverse landslide reduces gradually, and the curve presents a good linearity.

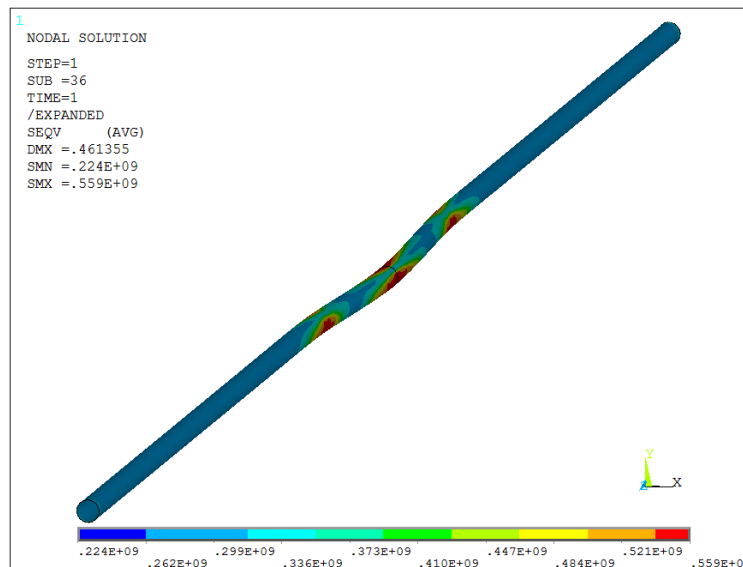


Figure 8: The finite element Mises stress contour plot of pipeline (H=2m, L=27m, $\beta=30^\circ$)

Figure 8 shows, that under the landslide thrust force, Mises stress in middle part of the pipeline and interface of soil slip zone and non-slip zone, is larger than the other positions. Such phenomena is in accordance with the practice discovery: the pipeline cracks or breaks from the middle part of pipeline and interface of soil slip zone and non-slip zone. Of course, this also indirectly indicates the feasibility of the above modeling.

Strength Reduction Method Model

To test and verify the reliability of above results, slope and pipe three-dimensional finite element model is set up using the ABAQUS finite element software (**Figure 9**).

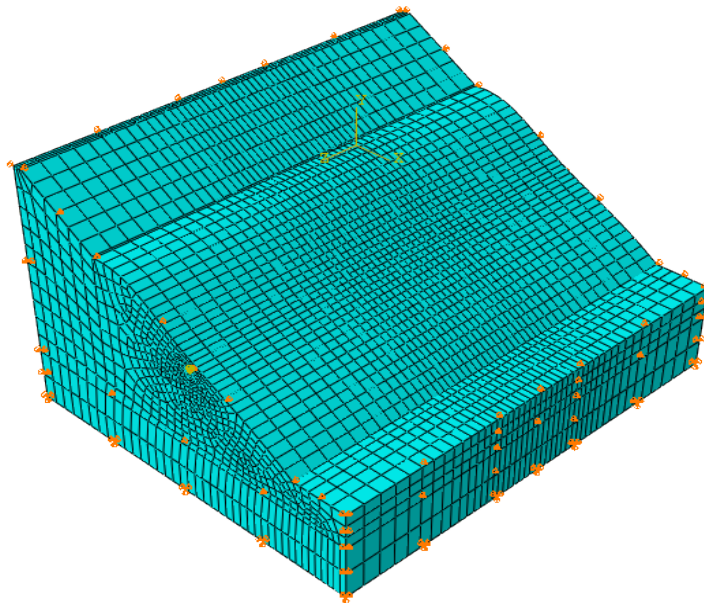


Figure 9: The slope and pipe three-dimensional model

The back of this Model is 70m high; the front is 25m high; the bottom is 100m long, 100m wide; the length of pipeline is 120m. The bottom of the bedrock is fixed; Two end faces, front and back end faces are constrained along the vertical direction of these end faces; the pipeline is embedded in soil. The stress-strain relationship of pipeline is the same as **Figure 2**. The buried depth of pipeline is 2m, other parameters refer to **Table 1**. Mohr-Coulomb model is used to express the constitutive relationship of upper soil. The bedrock possessing 15m thickness is regarded as an elastomer material. The bedrock and soil parameters all are shown in **Table 4**.

Table 4: The initial parameters of bedrock and soil

The parameters	E	μ	γ	φ	c
Upper soil	32.5	0.35	20	25	20
Bedrock	100	0.3	25	—	—

Notes: the elastic modulus E (MPa), the poisson's ratio μ , density γ (kN/m³), internal friction angle φ (°), cohesion c (kPa).

The gravity and pipeline internal pressure is applied to the model, then the Strength Reduction Method [21] is utilized to the 27m width zone in the model central area until the stability of slope reach to the state of limit equilibrium. With partial soil turning into plastic state, the failure surfaces under limit shear situation is produced gradually (**Figure 10**).

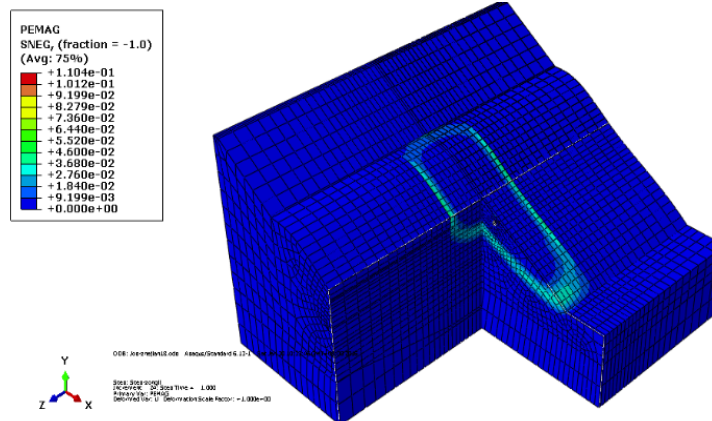


Figure 10: Plastic profile of slope in limit equilibrium state

When the strength reduction factor surpasses 1.87, the slope is in unstable state, and it will change into landslide. In this state, the displacement of the slip soil is shown as **Figure 11**, and the pipe Mises stress contour plot is shown in **Figure 12**.

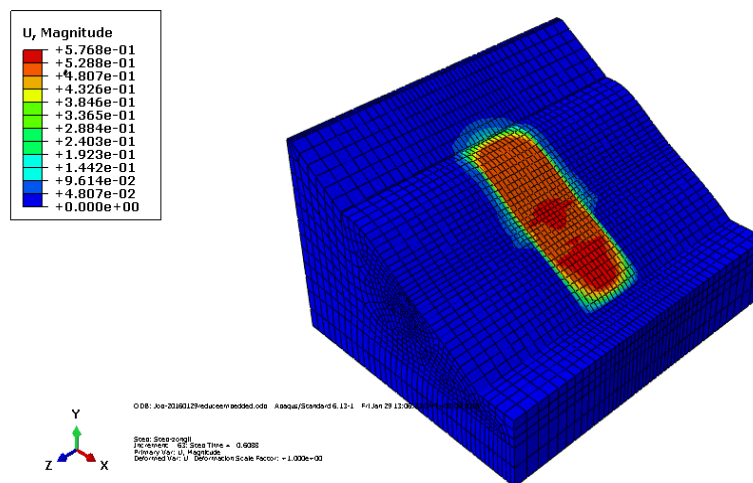


Figure 11: Displacement of slope in limit equilibrium state

Figure 11 shows that the maximal displacement of slope can be up to 0.5768 m. Meanwhile, **Figure 12** shows the maximal displacement of pipeline is 0.4937m, and the maximum Von Mises stress of pipeline reach to 530 MPa. While landslide happens, the maximum stress and displacement of pipeline are greater than the ones above. The initial internal friction angle ϕ and cohesion c of soil are reduced to 14° and 10.695kPa when the strength reduction factor reaches to 1.87. Through the **Figure 13**, β can be roughly determined as 30° . The other parameters refer to **Table 1** and **Table 2**. According to the formula in the literature [12], it can be calculated that the landslide thrust is 195.7kN/m. The load distribution is taken as parabolic distribution and the parabolic vertex load is adopted as the value we just calculate out. After that, we use the same simulation method as section 2.1 to calculate. Results display that the maximum Von Mises stress of pipeline reach to 566 MPa, which exceeds the pipe material yield strength more than 2%, and the maximum displacement of pipeline is 0.5212m. Due to these result values related to the pipeline are larger than those values when the slope is in limit equilibrium state. So these results can indirectly indicate the feasibility and correctness of the modeling in section 2.1.

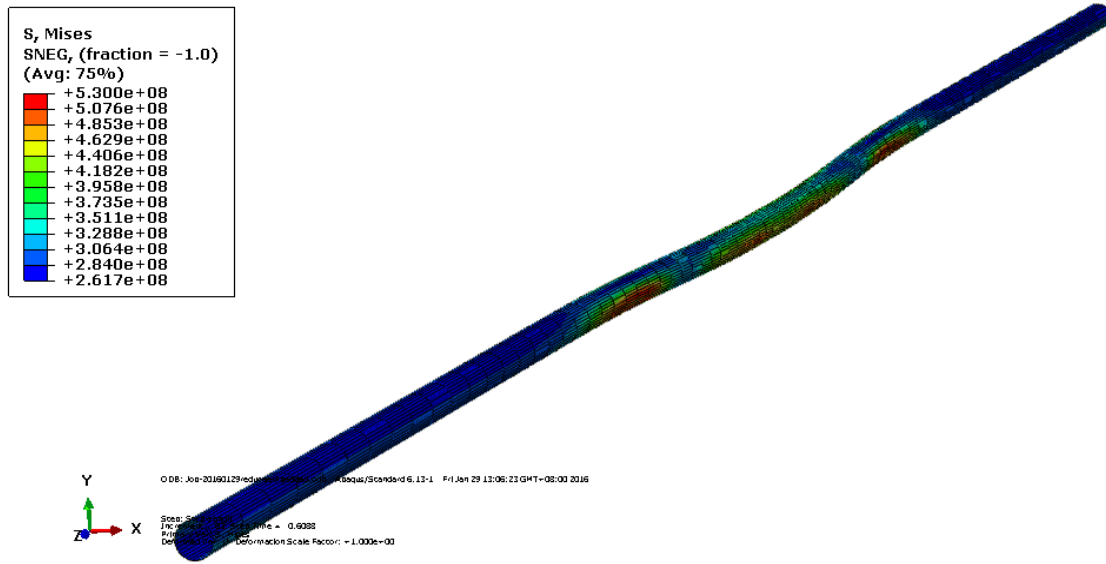


Figure 12: Von Mises stress contour plot of pipeline at the time of slope in limit equilibrium state.

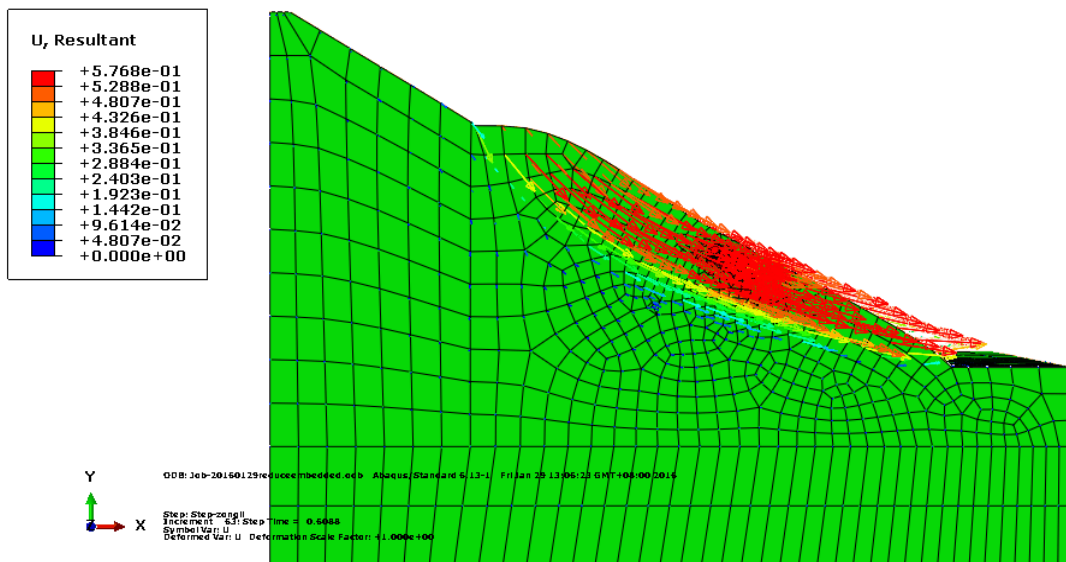


Figure 13: Symbols plot for displacements of slope in limit equilibrium state.

Similarly, the limit length of pipeline safely withstanding transverse landslide can be calculated out, when the X80 pipe ($D=1.016\text{m}$, $\delta=18.2\text{mm}$) is buried in different depth. The results are shown in **Table 5**.

Table 5: The limit length of X80 pipe ($D=1.016\text{m}$, $\delta=18.2\text{mm}$) safely withstanding transverse landslide

Δ	18.2		
H	1	2	3
L_0	32	29	26

Notes: pipe thickness δ (mm), buried depth of pipeline H (m), the limit length of pipeline safely withstanding transverse landslide L_0 (m).

CONCLUSIONS

Through the above results, some conclusions can be got, such as: When the same L value is adopted, the σ_{\max} value decreases gradually with the β value increase, and the σ_{\max} value increases gradually with the H value increases. Moreover, with the H value increases, the limit length of pipeline safely withstanding transverse landslide reduces gradually, and the curve presents a good linearity. Besides that, Mises stress in middle part of the pipeline and interface of soil slip zone and non-slip zone, is larger than the other positions when pipeline is subjected to the landslide thrust force.

Of course, the most important and practical conclusion is that the prediction and prevention practical indicator of pipeline damaged by landslide disaster can be proposed. The limit length L_0 of X80 pipe safely withstanding transverse landslide is used to express this indicator. In order to provide some references for engineering and design, the indicator is concluded and listed in **Table 6**.

Table 6: The limit length of X80 pipe safely withstanding transverse landslide

δ	15.3			18.2		
H	1	2	3	1	2	3
L_0	30	27	24	32	29	26

Notes: pipe thickness δ (mm), buried depth of pipeline H (m), the limit length of pipeline safely withstanding transverse landslide L_0 (m).

REFERENCES

- [1] Zhou, X. Y., Guo, Y. H., Lv, X. H. and Yang, Y. (2012) Study on Effects of Different Factors on Pipelines Risk under Landslide. *Industrial Safety and Environmental Protection*, 38(5), 42-44.
- [2] Xue, H. and Yang, X. Q. (2013) Design and Construction of Sino-Burma Oil-Gas Pipeline in Typical Geological Hazard Areas. *Oil & Gas Storage and Transportation*, 32(12), 1320-1324.
- [3] Ho, D., Wilbourn, N., Vega, A. and Tache, J. (2014) Safeguarding A Buried Pipeline in A Landslide Region. *Pipelines*, 1162-1174.
- [4] Wang, L. and Deng, Q. L. (2010) Mechanical Analysis on The Safety of Gas-Transporting Pipeline Caused by Landslide for Deformation. *Journal of Engineering Geology*, (18 suppl.), 340-345.
- [5] Lin, D., Lei, Y., Xu, K. F., Huang, R. Q., Zhu, Y., Luo, M. and Tao, H. W. (2011) An Experiment on The Effect of A Transverse Landslide on Pipelines. *Acta Petrolei Sinica*, 32(4), 728-732.
- [6] Kinash, O. and Najafi, M. (2012) Large-Diameter Pipe Subjected to Landslide Loads. *Journal of Pipeline Systems Engineering and Practice*, 3(1), 1-7.
- [7] Magura, M. and Brodniansky, J. (2012) Experimental Research of Buried Pipelines. *Procedia Engineering*, 40, 50-55.
- [8] Zhao, X. Y. and Zhao, Y. (2014) Strain Response Analysis of Oil and Gas Pipelines Subject to Lateral Landslide. *Journal of Natural Disasters*, 23(4), 250-256.
- [9] Liu, W. Q., Zheng, J., Wu, H. G., Wei, W. B. and Wang, H. W. (2015) Experimental Study on Effect of Orthogonal Landslide on Pipe by Model Simulation. *Railway Engineering*, (6), 117-120.
- [10] Huang, K., Lu, H. F., Wu, S. J., Han, X. Y. and Jang, Y. (2015) The Stress Analysis of Buried Gas Pipeline Crossing The Landslide. *Chinese Journal of Applied Mechanics*, 32(4), 689-693.
- [11] Lin, D., Xu, K. F., Huang, R. Q., Zhu, Y. and Luo, M. (2009) Landslides Classification of Pipeline for Transporting Oil and Gas. *Welded Pipe and Tube*, 32(12), 66-68.
- [12] Hao, J. B., Liu, J. P., Jing, H. Y., Zhang, H. Y., Shen, F. J., Tong, H. L. and Liu, L. M. (2012) A Calculation of Landslide Thrust Force to Transverse Pipeline. *Acta Petrolei Sinica*, 33(6), 1093-1097.
- [13] Calvetti, F., di Prisco, C. and Nova, R. (2004) Experimental and Numerical Analysis of Soil-pipe Interaction. *Journal of Geotechnical and Geoenvironmental Engineering*, 130(12), 1292-1299.
- [14] Alam, S., Allouche, E., Bartlett, C., Sherpa, A. and Keil, B. (2013) Experimental Evaluation of Soil-Pipe Friction Coefficients for Coated Steel Pipes. *Pipelines*, 360-371.
- [15] Vazouras, P., Dakoulas, P. and Karamanos, S. A. (2015) Pipe-soil Interaction and Pipeline Performance under Strike-slip Fault Movements. *Soil Dynamics and Earthquake Engineering*, 72, 48-65.

- [16] Dezfooli, M., Abolmaali, A. and Razavi, M. (2015) Coupled Nonlinear Finite-Element Analysis of Soil-Steel Pipe Structure Interaction. *International Journal of Geomechanics*, 15(1), 04014032-1~13.
- [17] Liu, Q. L. and Yang, M. (2004) Analytical Model and Parameters Determination of Interaction between Buried Pipe and Soil. *Rock and Soil Mechanics*, 25(5), 728-731.
- [18] Li, H., Xu, Z., Yang, Y. H., Chen, X. H. and Chen, X. (2012) Strength Failure Analysis of Buried Piping Loaded with Landslide. *Process Equipment & Piping*, 49(6), 54-57.
- [19] Wang, L. M., Shu, H. M. and Huang, X. G. (2015) FEM Analysis of Pipeline Subject to Transverse Landslide Based on the Strain Criterion. *Journal of Jiamusi University (Natural Science Edition)*, 33(4), 556-560.
- [20] Deng, D. M., Zhou, X. H. and Shen, Y. P. (1998) Calculation of Pipeline Inner Force and Distortion During Transverse Landslide Body. *Oil & Gas Storage and Transportation*, 17(7), 18-22.
- [21] Griffiths, D. V. and Lane, P. A. (1999) Slope Stability Analysis by Finite Elements. *Géotechnique* 49, (3), 387-403.



© 2016 ejge

Editor's note.

This paper may be referred to, in other articles, as:

Guizhi Li, Peng Zhang, Zhixiang Li, Zunhai Ke, Gengxin Wu: "Safety Length Simulation of Natural Gas Pipeline Subjected to Transverse Landslide" *Electronic Journal of Geotechnical Engineering*, 2016 (21.12), pp 4387-4399. Available at ejge.com.